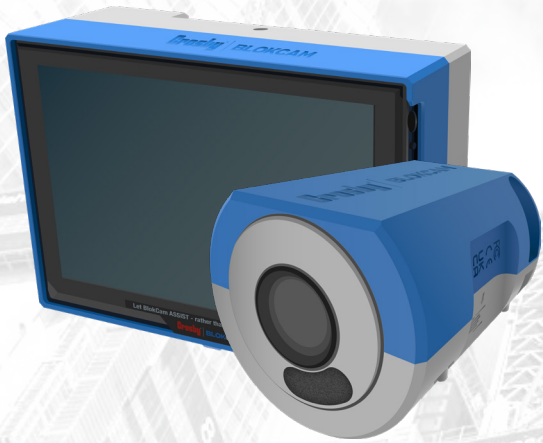


BLOKCAM



BlokCam is a wireless system that can be quickly and easily deployed to the hook block or boom tip of the crane.

The sound and view from below the camera is then transmitted and received wirelessly via the antenna systems to a screen.

This allows the operator to see and hear the load and surroundings, giving an unobstructed, live, audio-visual feed of the critical areas that working in the blind would never allow.

80000032



Easy & quick
to install



Improve
lifting times



Reduce impact
& collisions



Improve
communications



Reduce the
blind lift situations



Connectivity

BlokCam Office Link

BlokCam Office Link allows the data from your BlokCam to be captured in a site office for crane monitoring and surveillance. Your chosen computer can monitor and download data from multiple systems. Other benefits include:

- Quick and easy to install
- Screen shot function available
- Extract footage for training and investigation
- Integrated 12dBi antenna
- Designed for outdoor applications
- 1km transmission distance
- Rugged mounting bracket
- IP66

4G Router

With a 4G router connected to your BlokCam system, you can stream crane footage and extract recordings from anywhere in the world!

BLOKCAM

Key Features:

- Uses high powered neodymium magnets
- The lens is auto-focus and always gives clear views on the load and surrounding area below the hook
- Audio from sensor to cab
- Record loop for up to 30 days
- Hands free operation

Specification:

HD 1080p Resolution

Optional single and split screen mode with additional cameras

LED indicators

Two batteries per system

12 hour battery life

Durable all-weather design manufactured to IP67 rating -20 °c-55 °c (-4F-131F) operating temperature

CE and FCC approved

What's included:

- Sensor (S5)
- Monitor (M3)
- Transmitter (T3)
- Battery (B6)
- Charger (B6-CH3)

Additional products available:

- 4G router with SIM-card
- BlokCam systems installation
- BlokCam systems removal
- Battery charger
- Battery pack

