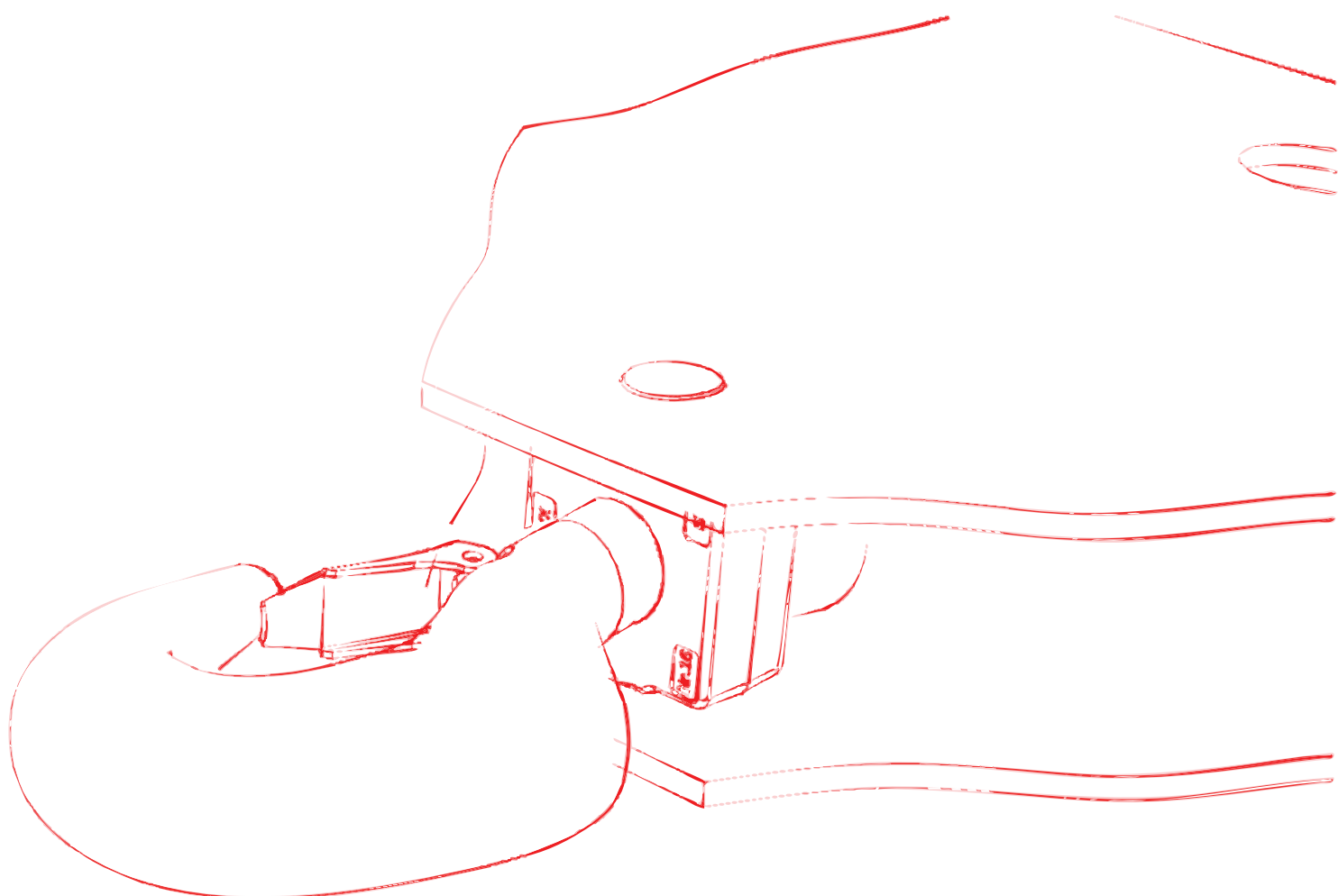


## Technical Information

### System component

### WOLFF Tower Tie Frame



**Original operating manual**

German

English



*Published by*

**WOLFFKRAN GmbH**

Austraße 72

74076 Heilbronn

Germany

Phone +49 7131 9815 0

Fax +49 7131 9815 355

[www.wolffkran.com](http://www.wolffkran.com)

[info@wolffkran.de](mailto:info@wolffkran.de)

### Copyright

This documentation including all of its subsections is protected by copyright laws.

Any type of use or modification outside of the stringent limits of the copyright laws without permission of WOLFFKRAN GmbH is prohibited and subject to penalties.

This applies particularly for copying, translation, microfilming and storage and processing in electronic systems.

At the time of printing, the information, data, illustrations and notes comprised in this manual were up-to-date.

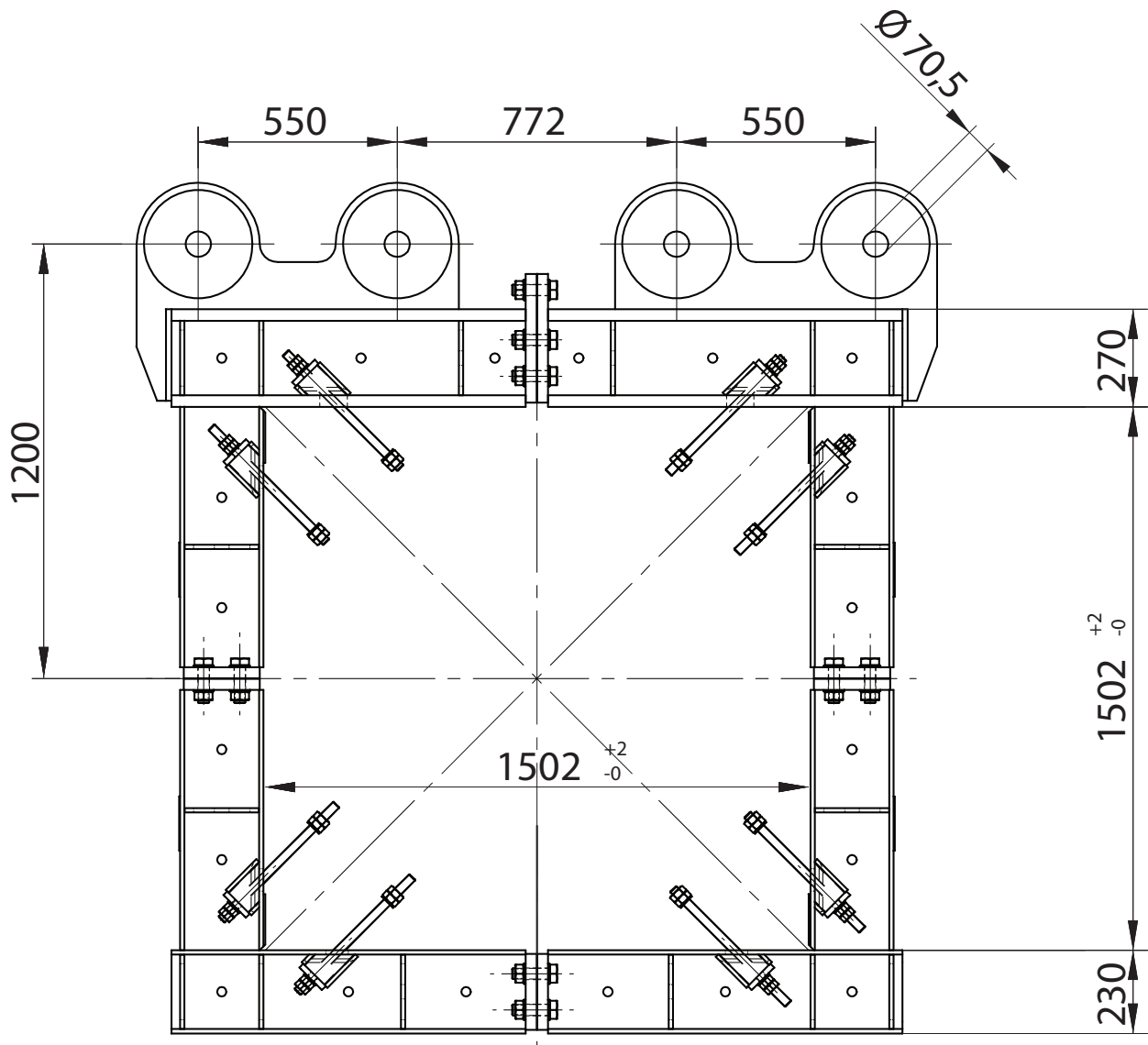
Subject to change of design, error and typos.

## Table of contents

<b>1 Tower tie frame ASR 15 .....</b>	<b>1 / 1</b>
<b>2 Tower tie frame ASR 15/20 .....</b>	<b>2 / 1</b>
<b>3 Tower tie frame ASR 20 .....</b>	<b>3 / 1</b>
<b>4 Tower tie frame ASRV 20.....</b>	<b>4 / 1</b>
<b>5 Tower tie frame ASR2M 20 .....</b>	<b>5 / 1</b>
<b>6 Tower tie frame ASR3M 20 .....</b>	<b>6 / 1</b>
<b>7 Tower tie frame ASR 23 .....</b>	<b>7 / 1</b>
<b>8 Tower tie frame ASR2M 23 .....</b>	<b>8 / 1</b>
<b>9 Tower tie frame ASR3M 23 .....</b>	<b>9 / 1</b>
<b>10 Tower tie frame ASR 29 .....</b>	<b>10 / 1</b>
<b>11 Tower tie frame ASR 33 .....</b>	<b>11 / 1</b>

**This page was intentionally left blank!**

## 1 Tower tie frame ASR 15



The ASR 15 can only be used for the TFSA15/ TFS15/ UV15/ UVA 15 tower elements.

Weight of the tower tie frame

1190 kg

The tower tie frame ASR 15 represents an independent module for applications with a WOLFF slewing tower crane system.

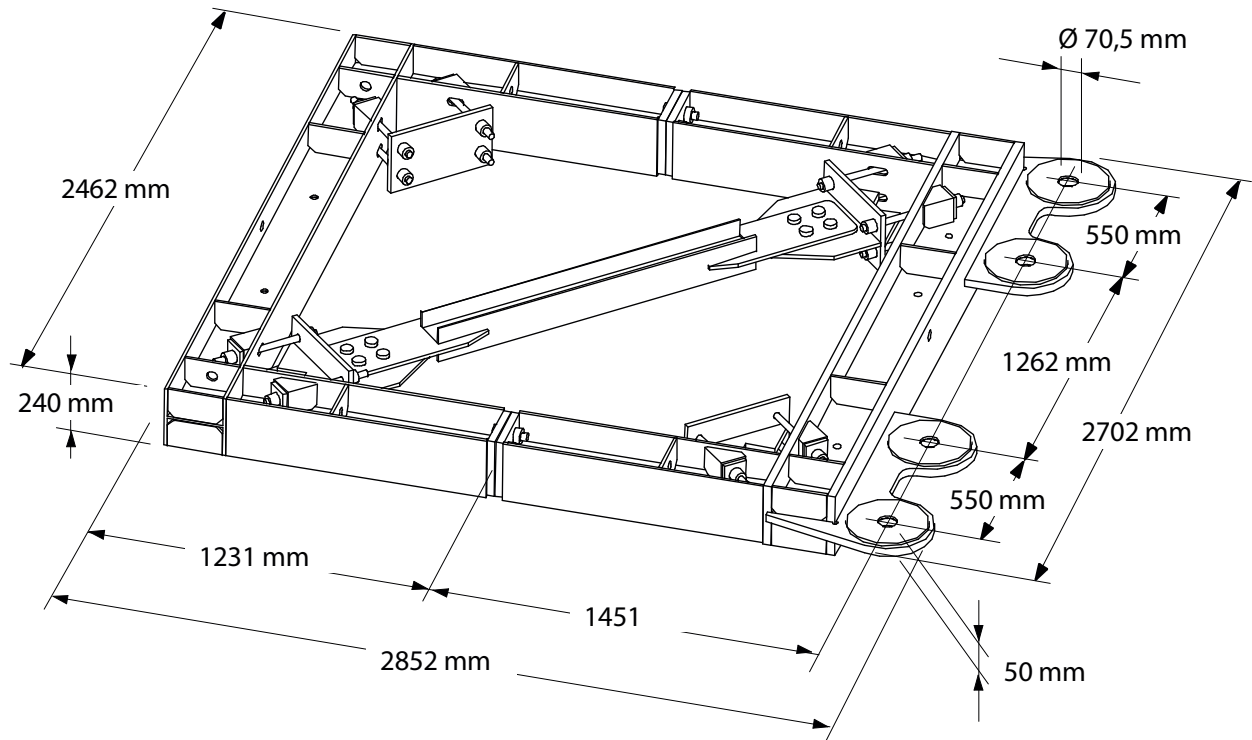
**This page was intentionally left blank!**



**This page was intentionally left blank!**



### 3 Tower tie frame ASR 20



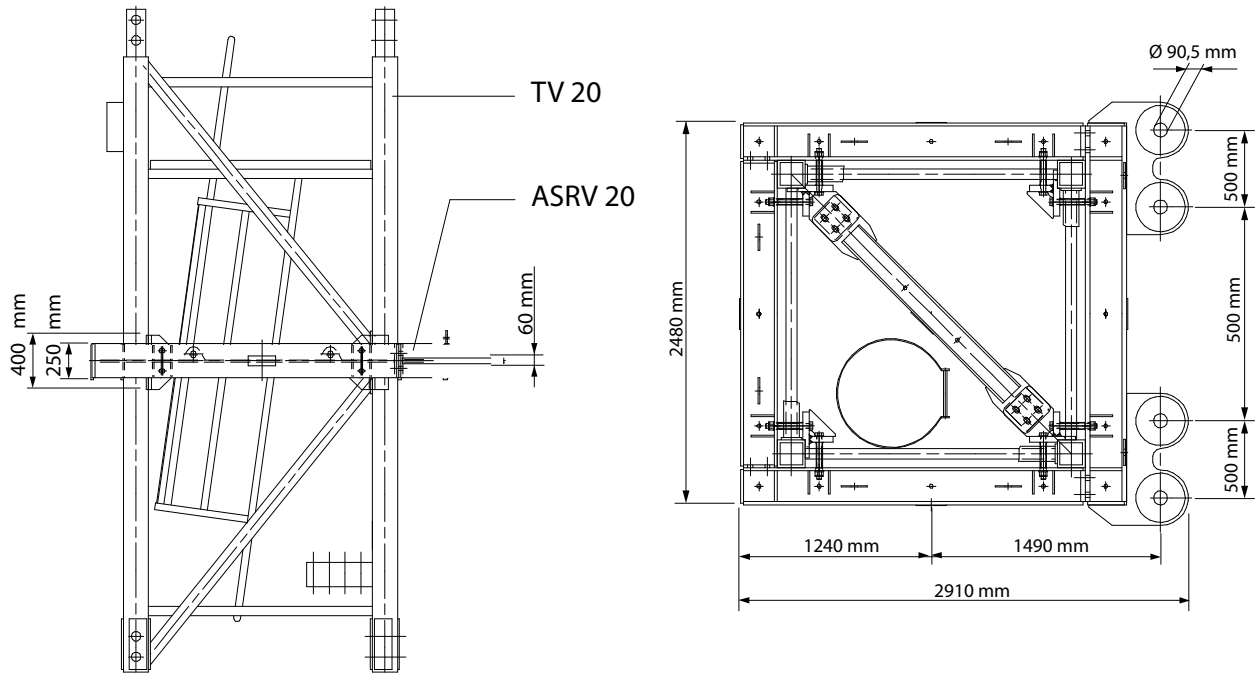
The ASR 20 can be used with all 20.4 tower elements.

Weight of the tower tie frame	1400 kg
-------------------------------	---------

The bracing frame ASR 20 represents an independent module for applications with a WOLFF slewing tower crane system.

**This page was intentionally left blank!**

## 4 Tower tie frame ASRV 20



Tower tie frame ASRV 20

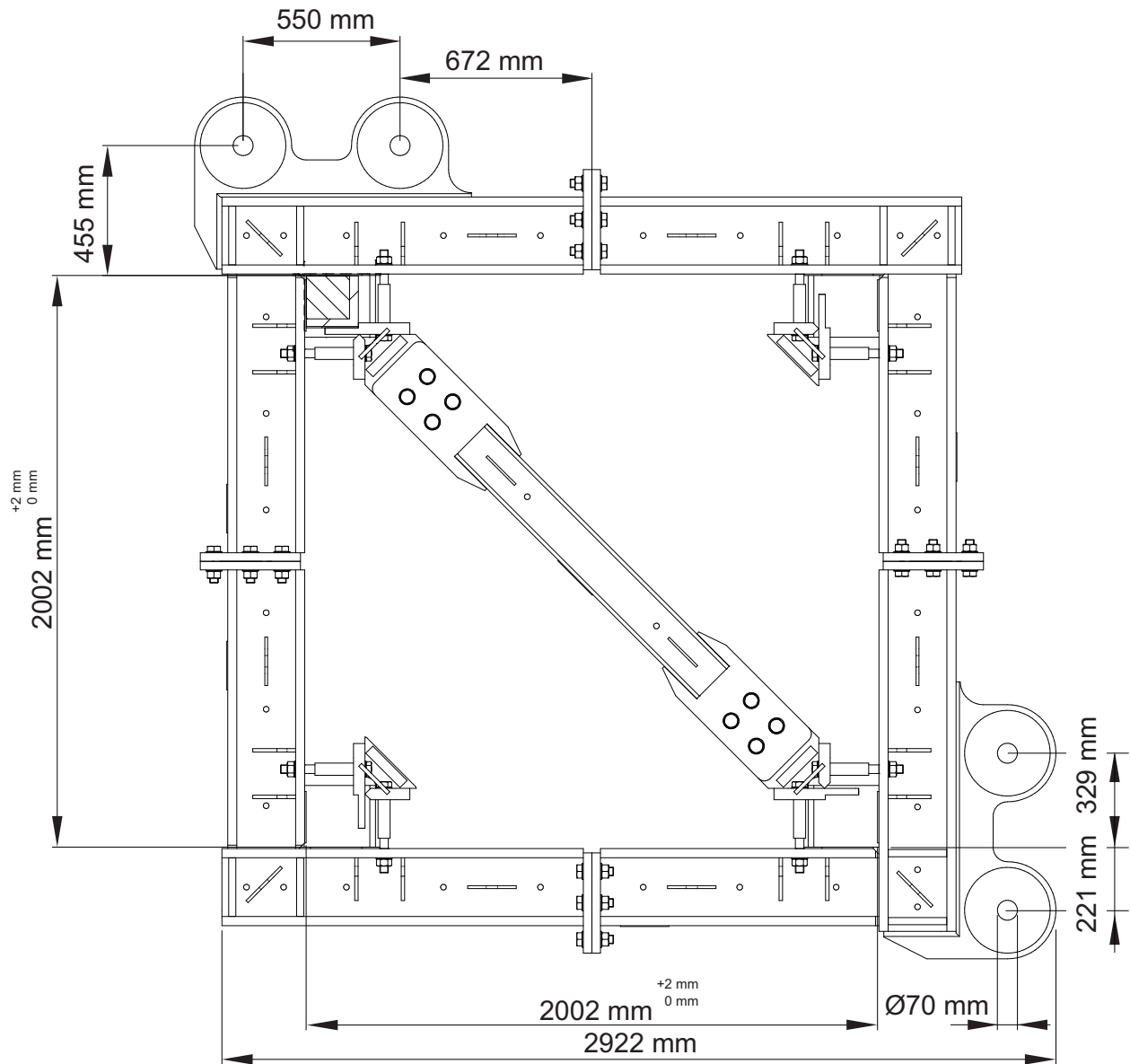
The ASRV 20 can only be used for the TV 20 tower element.	
Weight of the tower tie frame	1820 kg

The tower tie frame ASRV 20 represents an independent module for applications with a WOLFF slewing tower crane system.

**This page was intentionally left blank!**

## 5 Tower tie frame ASR2M 20

### Technical data ASR2M 20

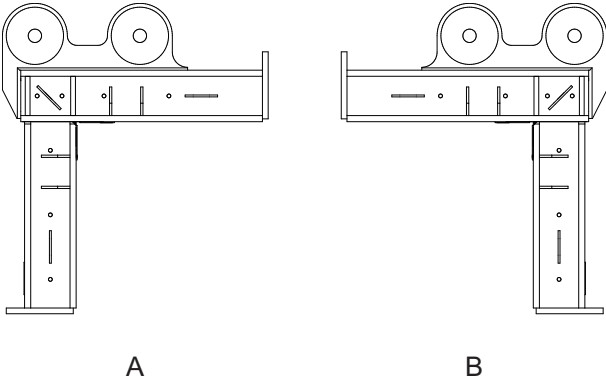


Weight ASR2M 20	2455 kg
-----------------	---------

The tower tie frame ASR2M 20 represents an independent module for applications with a WOLFF slewing tower crane system.

When slewing tower cranes are used in the construction of high buildings, they must be braced from a certain hook height, depending on the building size.

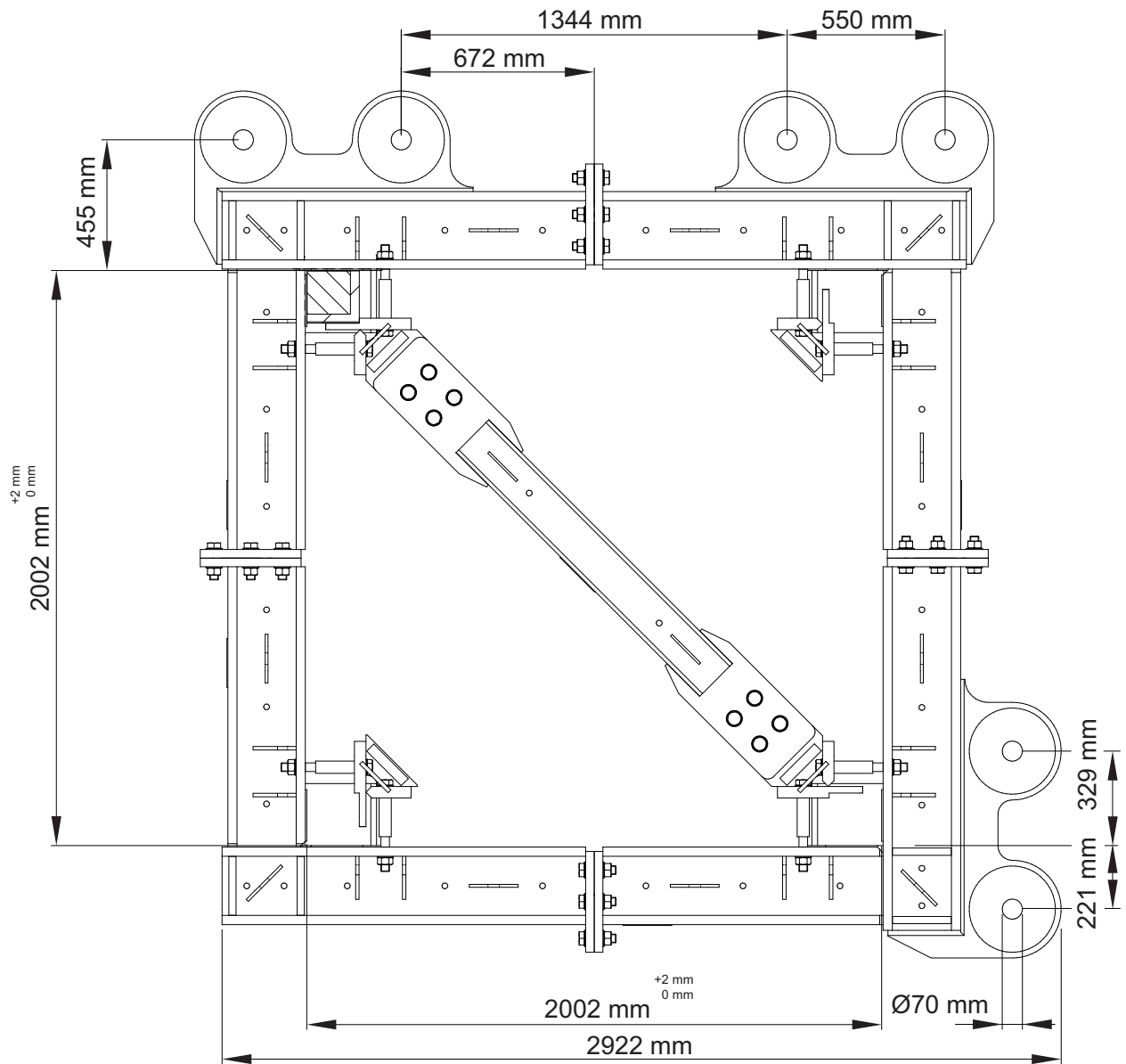
### Using the segments with connection for brace rods



The U-frame segments with connection for the brace rods can be used on either side, left (A) and right (B). For the alignment of the U-frames for mounting the tower tie frame, refer to the construction site plan.

## 6 Tower tie frame ASR3M 20

### Technical data ASR3M 20

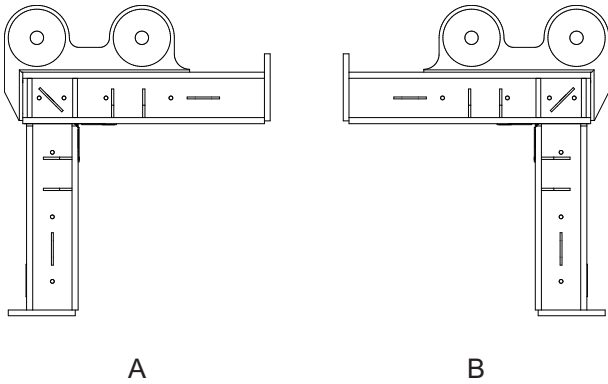


Weight ASR3M 20	2555 kg
-----------------	---------

The tower tie frame ASR2M 20 represents an independent module for applications with a WOLFF slewing tower crane system.

When slewing tower cranes are used in the construction of high buildings, they must be braced from a certain hook height, depending on the building size.

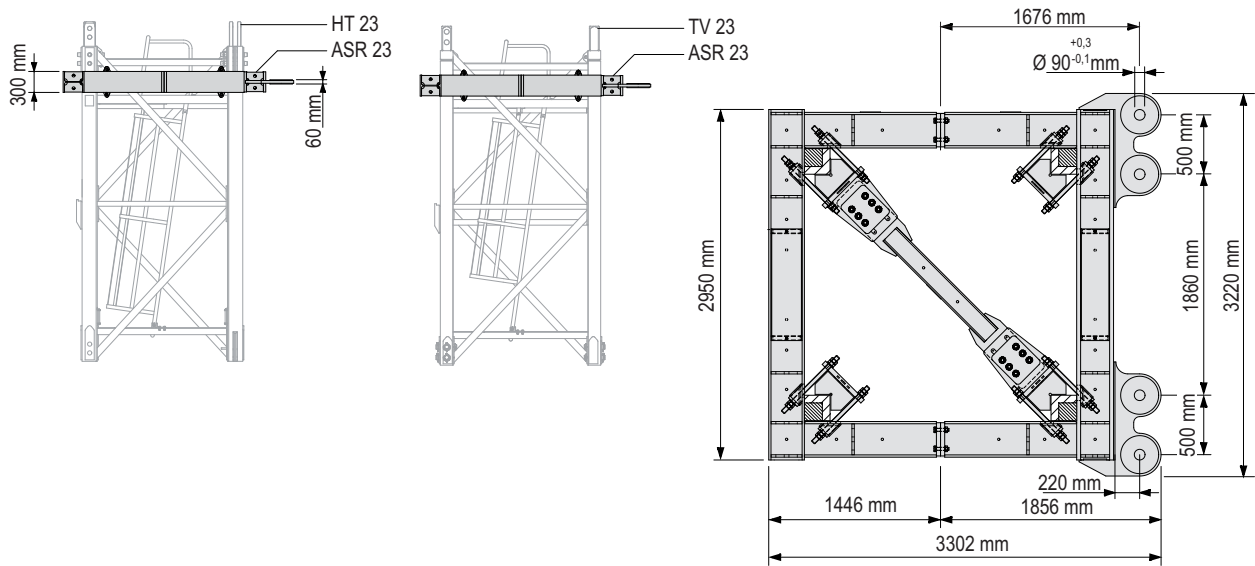
### Using the segments with connection for brace rods



The U-frame segments with connection for the brace rods can be used on either side, left (A) and right (B). For the alignment of the U-frames for mounting the tower tie frame, refer to the construction site plan.



## 7 Tower tie frame ASR 23



The ASR 23 can only be used for the HT 23 and TV 23 tower element.	
Weight of the tower tie frame	2535 kg

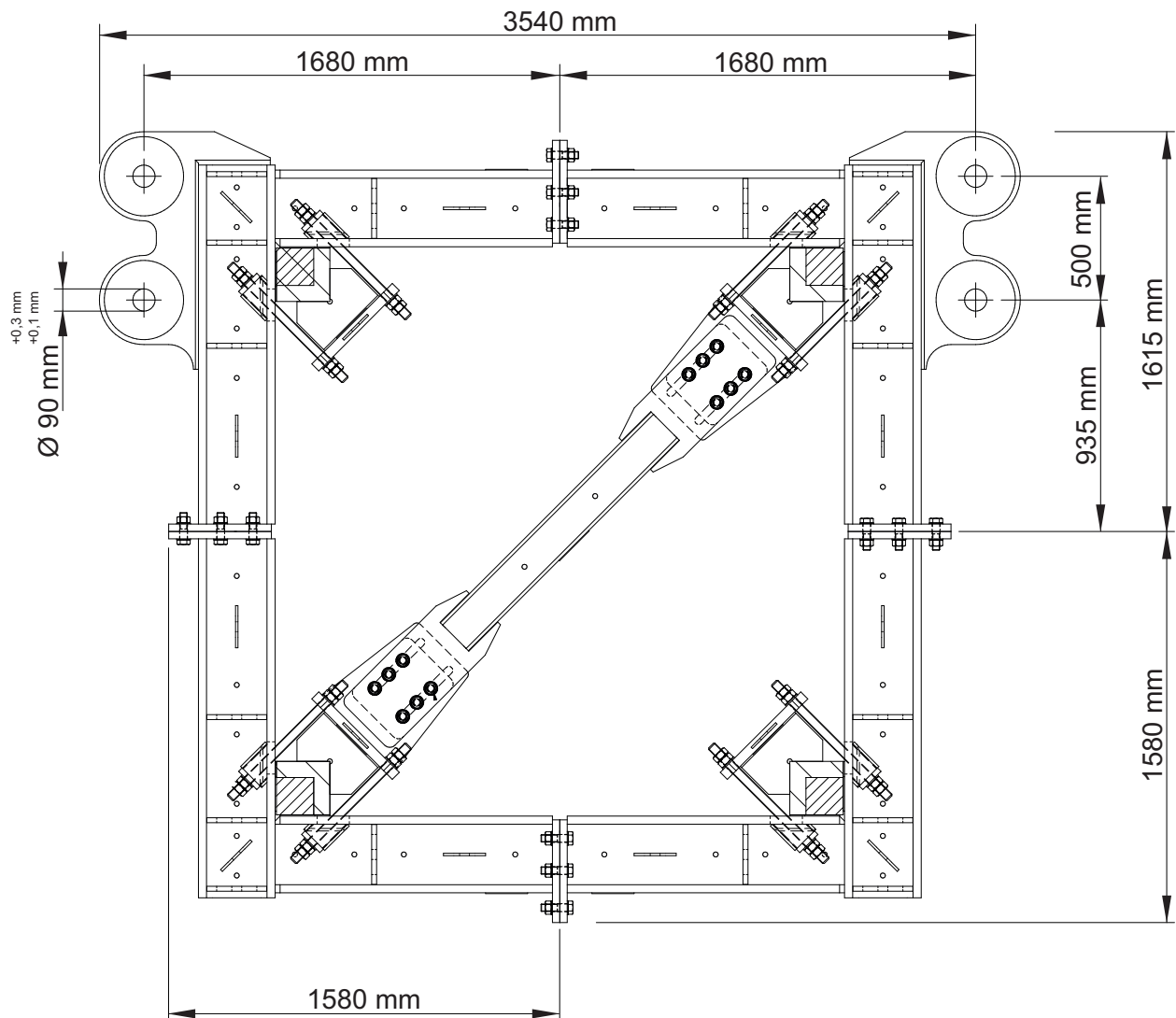
The tower tie frame ASR 23 represents an independent module for applications with a WOLFF slewing tower crane system.

When slewing tower cranes are used in the construction of high buildings, they must be braced from a certain hook height, depending on the building size.

**This page was intentionally left blank!**

## 8 Tower tie frame ASR2M 23

### Technical data ASR2M 23

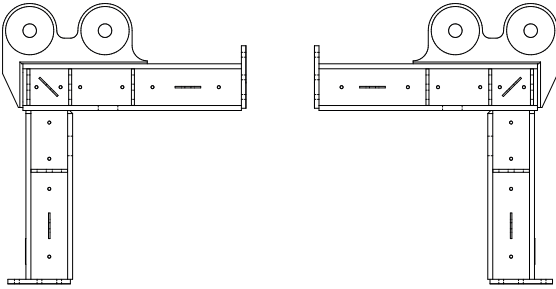


Weight ASR2M 23, complete	3250 kg
---------------------------	---------

The tower tie frame ASR2M 23 represents an independent module for applications with a WOLFF slewing tower crane system.

When slewing tower cranes are used in the construction of high buildings, they must be braced from a certain hook height, depending on the building size.

### Using the segments with connection for brace rods



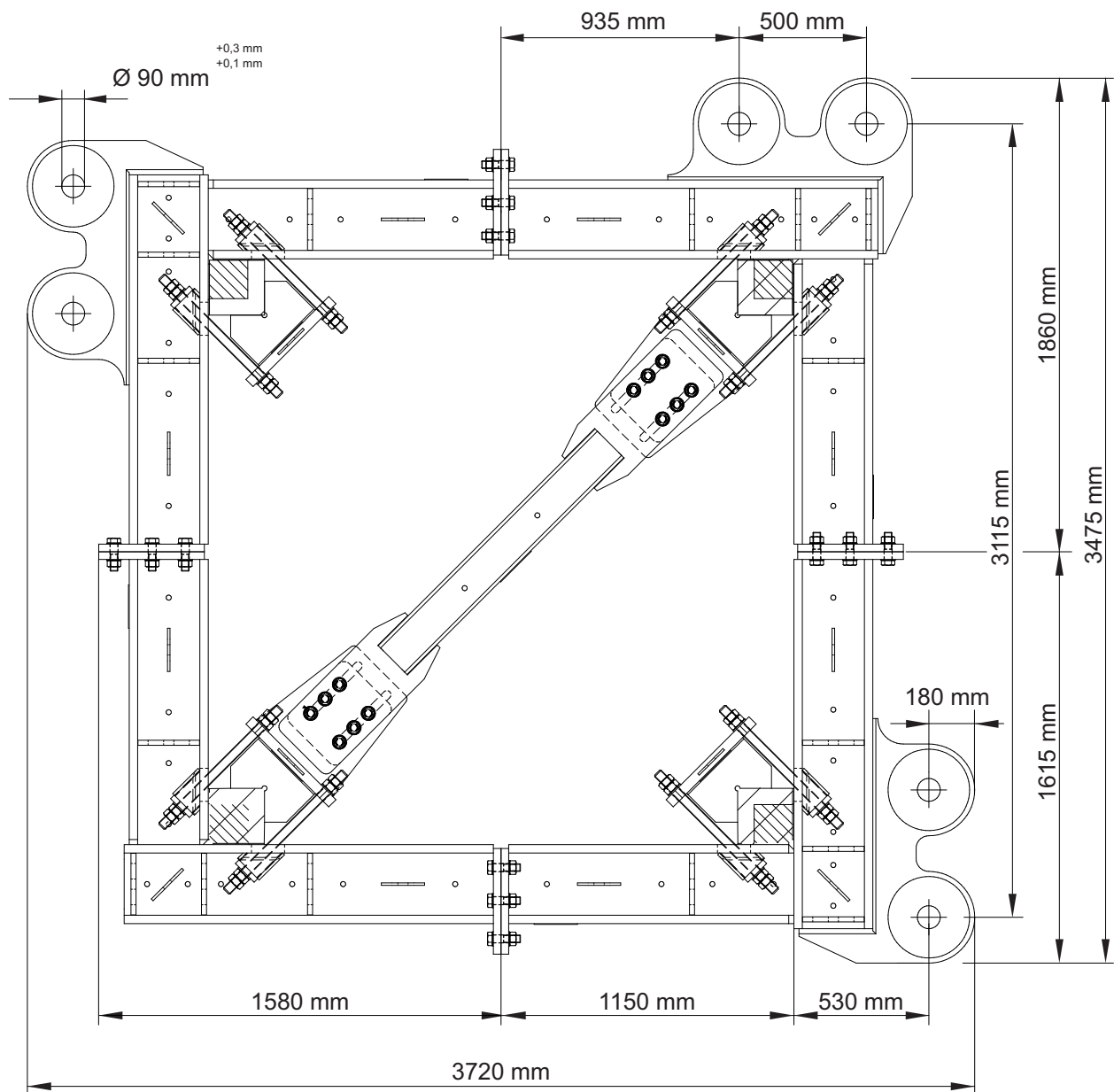
A

B

The U-frame segments with connection for the brace rods can be used on either side, left (A) and right (B). For the alignment of the U-frames for mounting the tower tie frame, refer to the construction site plan.

## 9 Tower tie frame ASR3M 23

### Technical data ASR3M 23



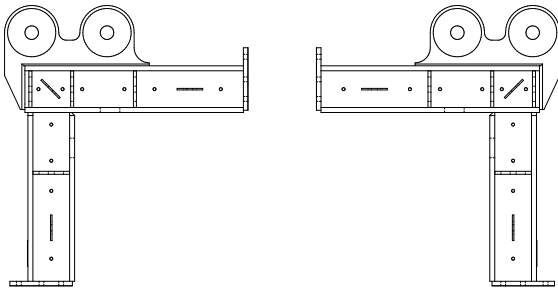
Weight ASR3M 23, complete

3425 kg

The tower tie frame ASR3M 23 represents an independent module for applications with a WOLFF slewing tower crane system.

When slewing tower cranes are used in the construction of high buildings, they must be braced from a certain hook height, depending on the building size.

### Using the segments with connection for brace rods

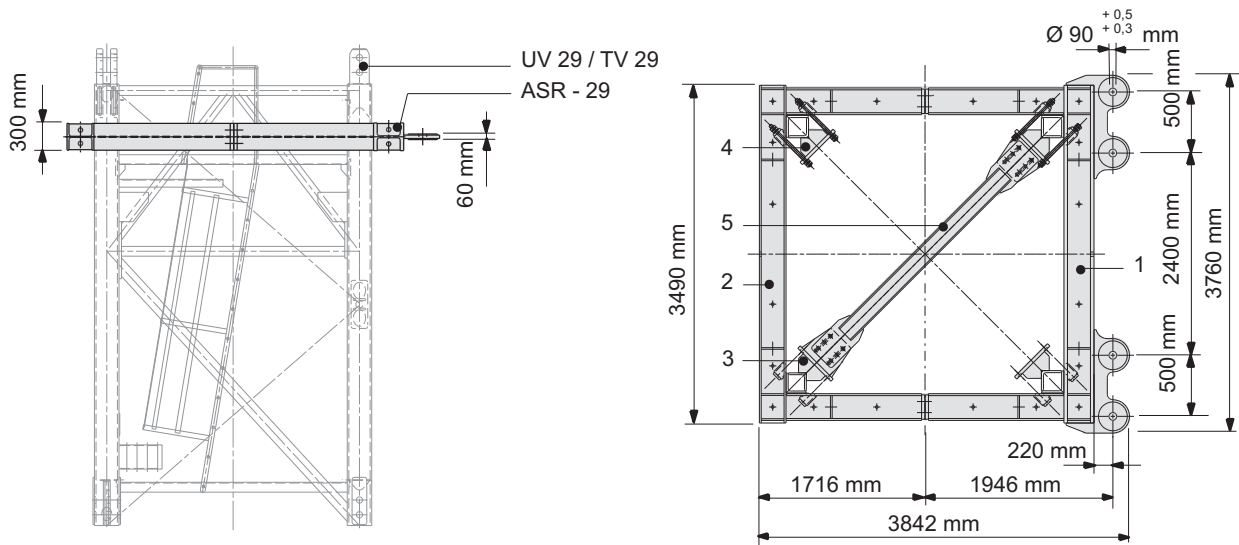


A

B

The U-frame segments with connection for the brace rods can be used on either side, left (A) and right (B). For the alignment of the U-frames for mounting the tower tie frame, refer to the construction site plan.

## 10 Tower tie frame ASR 29



The ASR 29 can only be used for the UV 29 and TV 29 tower element.

Weight of the tower tie frame

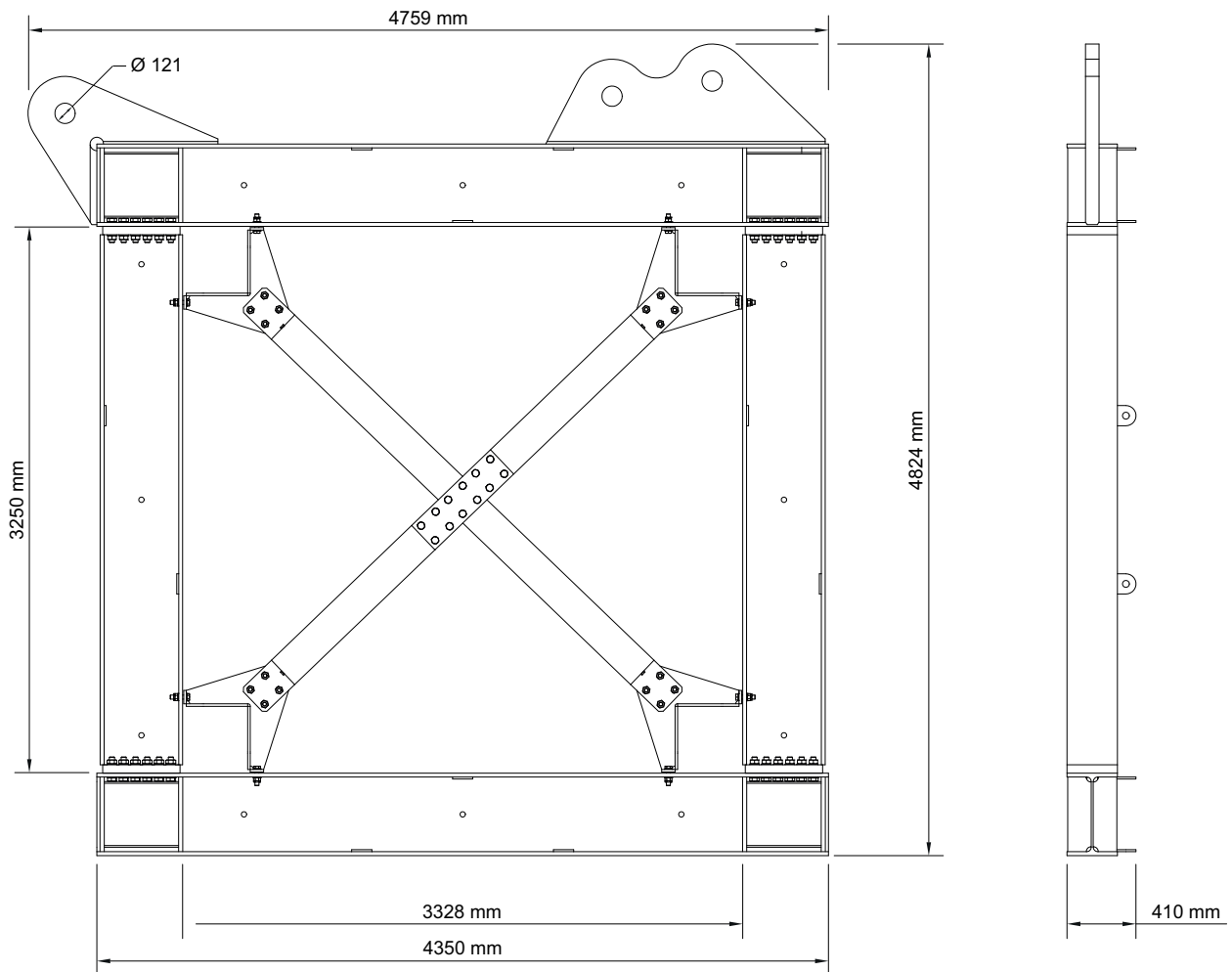
2985 kg

The tower tie frame ASR 29 represents an independent module for applications with a WOLFF slewing tower crane system.

**This page was intentionally left blank!**



## 11 Tower tie frame ASR 33



Weight ASR 33, complete	3980 kg
-------------------------	---------

The tower tie frame ASR 33 represents an independent module for applications with a WOLFF slewing tower crane system.

When slewing tower cranes are used in the construction of high buildings, they must be braced from a certain hook height, depending on the building size.

**This page was intentionally left blank!**

**This page was intentionally left blank!**

## **WOLFFKRAN Group**

*Headquarter international:*

### **WOLFFKRAN AG**

Hinterbergstrasse 17

CH-6330 Cham

Switzerland

Phone +41 41 766 85 00

Fax +41 41 766 85 99

[info@wolffkran.com](mailto:info@wolffkran.com)

*Manufacturing:*

### **WOLFFKRAN GmbH**

Austraße 72

D-74076 Heilbronn

Germany

Phone + 49 7131 9815 0

Fax + 49 7131 9815 355

[info@wolffkran.de](mailto:info@wolffkran.de)

### **WOLFFKRAN Werk Brandenburg GmbH**

Frederik-Ipsen-Straße 5

D-15926 Luckau OT Alverno

Germany

Phone + 49 35456 674 0

Fax + 49 35456 674 200

[info@wolffkran.de](mailto:info@wolffkran.de)