

**WOLFFKRAN**

## **WOLFF 1250 B**

Modular tower  
crane design  
offering heavy  
lifting performance.

**STRONG - POWERFUL - FLEXIBLE**

## The WOLFF 1250 B

### Impressive profile in the XXL class

- Class leading reach and capacity
- Tip load capacity of 12.1 tonnes\* at a maximum hook radius of 80 meters
- Maximum load capacity of 60 tonnes\*\* up to 25 meter radius
- 132 kW hoisting unit offering a hook path of 990 meters and hook speeds of up to 190 m/min\*
- WOLFF patented re-reeving mechanism for efficient and safe reeving from single- to 2- and 3-fall operation
- Possible jib lengths from 40 to 80 meters in 5 meter increments

\* in single-fall operation with WOLFF Boost activated

\*\* in 3-fall operation with a 40 m jib





## Towering above the competition

The WOLFF 1250 B offers a remarkable freestanding tower height of 90 meters on the WOLFF tower section TV 33-5, with an exterior dimension of 3.33 x 3.25 meters.

It can be climbed up to 50 meters per day with the WOLFF KTS 33 external climbing system. Like all WOLFF external climbing systems, the KTS 33 is a single stroke system, meaning that the crane is pushed up in one stroke to make room for the new tower section. Besides being very efficient, single stroke climbing also has a key safety benefit that the crane can be lowered manually in case of a power failure.

## Remarkable hoisting speeds offering flexible performance

With 132 kW hoisting power on tap and a maximum hook path of 990 meters, the WOLFF 1250 B offers a 20 tonne line capacity with hook speeds of 190 m/min and a luffing speed as low as 2.5 minutes from maximum to minimum jib radius.

While heavy loads can be placed with precision and care, the WOLFF 1250 B retains fast winch speeds required to return empty or when lifting lighter loads. These high speed options offer valuable savings on hook time and considerably increase hook availability.





Excellence by Design

## Easy handling thanks to superb crane design

Despite its XXL lifting capacity, the WOLFF 1250 B is designed according to the same modular principle as all WOLFF tower cranes, with a focus on keeping individual component weights down to facilitate assembly and transportation.

**Structural strength:** The triangular lattice jib offers strength and flexibility while saving on weight and manufacturing costs.

**Typical WOLFF:** The counter jib is designed in the same way as all WOLFF luffing jib cranes (with a tower top and luffing rope mechanism) in order to keep down individual component weights.

**Foldable tower top:** The tower top can be folded down by means of a joint for transportation.

**For even more convenience:** A simple connection concept allows for the quick and secure assembly of the machine platform and an auxiliary assembly winch considerably facilitates the reeving of all ropes.





## Available with WOLFF system components for versatile use

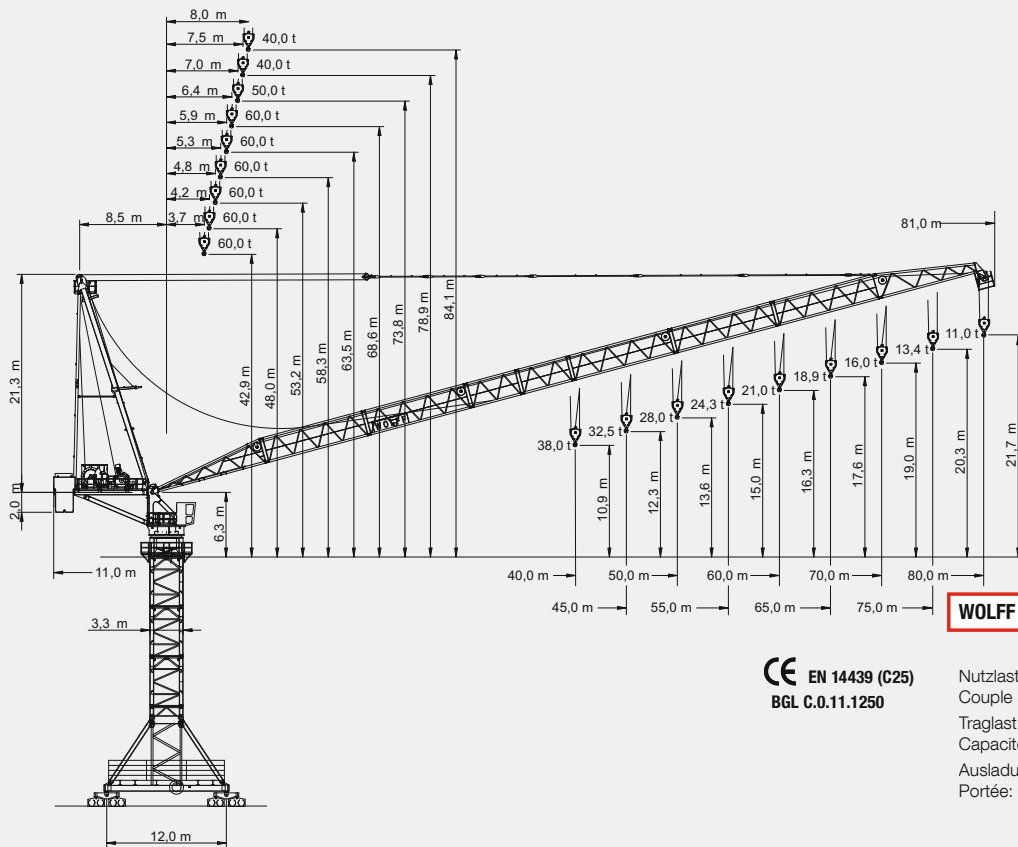
The WOLFF 1250 B uses the tower section TV 33-5, for which an external climbing system, bracing rods and tower ties are available.

It can be placed on foundation anchors, a cross frame or a travelling undercarriage and thus optimally adapted to suit the requirements of any job site.

WOLFF 1250 B

# The WOLFF 1250 B

## Plan Drawing · WOLFF 1250 B



**WOLFF 1250 B**

CE EN 14439 (C25)  
BGL C.0.11.1250

Nutzlastmoment / load moment /  
Couple de charge: **max. 15000 kNm**  
Traglast / lifting capacity /  
Capacité de levage: **max. 60,0 t**  
Ausladung / jib radius /  
Portée: **max. 80,0 m**



## Proven Track Record Worldwide



POWER PLANT // Wilhelmshaven, Germany



POWER PLANT // Kusile, South Africa



## Load Chart [t] · WOLFF 1250 B

### Traglasten (t) · WOLFF 1250 B

#### Load Data Charges

Ausladung (m) / jib radius (m) / Portée (m)	30	35	40	45	50	55	60	65	70	75	80
80 8,0 – 52,0	20,0	20,0	20,0	20,0	20,0	18,6	16,6	14,9	13,4	12,1	11,0
75 7,5 – 55,5	20,0	20,0	20,0	20,0	20,0	20,0	18,1	16,3	14,7	13,4	
70 7,0 – 59,0	20,0	20,0	20,0	20,0	20,0	20,0	19,6	17,7	16,0		
65 6,4 – 61,5	20,0	20,0	20,0	20,0	20,0	20,0	20,0	18,9			
60 5,9 – 60,0	20,0	20,0	20,0	20,0	20,0	20,0	20,0				
55 5,3 – 55,0	20,0	20,0	20,0	20,0	20,0	20,0					
50 4,8 – 50,0	20,0	20,0	20,0	20,0	20,0						
45 4,2 – 45,0	20,0	20,0	20,0	20,0							
40 3,7 – 40,0	20,0	20,0	20,0								

### Traglasten (t) · WOLFF 1250 B

#### Load Data Charges

Ausladung (m) / jib radius (m) / Portée (m)	30	35	40	45	50	55	60	65	70	75	80
80 8,0 – 29,0	38,4	31,9	27,1	23,3	20,2	17,8	15,7	13,9	12,4	11,1	10,0
75 7,5 – 30,5	40,0	34,0	29,0	25,0	21,9	19,3	17,1	15,3	13,8	12,4	
70 7,0 – 32,0	40,0	36,1	30,8	26,7	23,4	20,7	18,5	16,6	15,0		
65 6,4 – 33,0	40,0	37,4	32,1	28,0	24,7	22,0	19,8	17,9			
60 5,9 – 34,0	40,0	38,8	33,4	29,3	26,0	23,3	21,0				
55 5,3 – 35,0	40,0	40,0	34,6	30,4	27,1	24,3					
50 4,8 – 36,0	40,0	40,0	35,7	31,4	28,0						
45 4,2 – 37,0	40,0	40,0	36,8	32,5							
40 3,7 – 38,0	40,0	40,0	38,0								

### Traglasten (t) · WOLFF 1250 B

#### Load Data Charges

Ausladung (m) / jib radius (m) / Portée (m)	30	35	40	45	50	55	60	65	70	75	80
70 7,0 – 26,0	50,0	42,4	35,3	30,0	25,8	22,5	19,8	17,6	15,6	14,0	
65 6,4 – 22,5	43,5	36,5	31,2	27,0	23,8	21,1	18,8	16,9			
60 5,9 – 23,0	44,9	37,8	32,4	28,3	25,0	22,3	20,0				
55 5,3 – 23,5	46,1	39,0	33,6	29,4	26,0	23,3					
50 4,8 – 24,0	47,3	40,1	34,6	30,4	27,0						
45 4,2 – 24,5	48,5	41,2	35,8	31,5							
40 3,7 – 25,0	49,8	42,5	37,0								

## Drives · WOLFF 1250 B · (Hw 40132 FU)

### Antriebe · WOLFF 1250 B · (Hw 40132 FU)

#### Mechanisms Mécanismes

Motor (kW) motor Moteur	132	132	132	110,0	2 x 11,0	8 x 5,5
Geschwindigkeit speed Vitesse	0 – 2,9 t 0...190 m/min stufenlos / stepless / en continue 0 – 20,0 t 0...33 m/min	0 – 6,2 t 0...95 m/min stufenlos / stepless / en continue 0 – 40,0 t 0...17 m/min	0 – 9,3 t 0...63 m/min stufenlos / stepless / en continue 0 – 60,0 t 0...11 m/min	2,5 – 3,5 min	0,70 min <sup>-1</sup>	30,0 m/min
Hakenweg (m) hook path course du crochet	990	495	330			



DAM // Lac d'Emosson, Switzerland



DRY DOCK // Antwerp, Belgium

## The WOLFF Standard

### *Best all-round visibility from the WOLFF CAB*

The WOLFF CAB crane cabin offers optimum visibility and over-view. The adjustable seat and ergonomically designed control panels allow for fatigue-free working. Tinted windows, quality blinds, an effective heating system and air conditioning ensure a comfortable working environment, regardless of season or climate zone. Further amenities such as a radio with SD/USB ports and Bluetooth, a drinks cooler, plenty of sockets and ample storage space are also included as standard. An easy-to-read 7-inch touchscreen color monitor optimally supports the crane operator.



### *Economical transportation on land and water*

All components of the XXL WOLFF luffing jib cranes are designed to fit on regular trucks without any telescoping or special securing. Thanks to proven suspension brackets on all crane components, these can be safely and quickly loaded and unloaded. But the XXL WOLFF luffing cranes can also travel overseas economically since all components – except for the machine platform for which a flat rack is required – are container compatible.



### *Everything under (WOLFF crane) control*

WOLFF cranes are fitted with the latest crane controls to ensure highest levels of safety. They adjust the performance of all drives to the requirements of the job site and support the crane operator with many security features, such as overload protection, working range limitation and an anti-collision interface. Also integrated as standard is the WOLFF Boost function increasing load capacity by 10% by automatically turning off one of the drives, as well as the remote data transmission system WOLFF Link facilitating maintenance and repairs.



### *Best service for best performance*

WOLFF cranes are fitted with platforms, railings and further elements designed to increase safety around all major crane components and parts. Further, all WOLFF cranes feature an electrical central lubrication of the slew ring, a slip ring mechanism for optimal signal transmission and a temperature-controlled switch cabinet with heating and ventilation ensuring efficient and uninterrupted operating time of the crane. Together with the remote maintenance options offered by WOLFF Link and the experienced quick-response WOLFF Service-Teams nearby, you can rest assured that the WOLFF cranes on your site will perform day in and out.



61000502 04/2019

